



Cross-border cooperation in the Euregio Meuse-Rhine



Frank Klaassen M.D., chairman of the board of the GGD Zuid-Limburg , chairman of the steeringgroup Emric, chairman of the focusgroup Eumed

Fourth Euregional education day, 20 november 2015

EMRIC

(Euregion Meuse-Rhine In Crises)
(formerly Ösikat)

Established partnership of public partners in the Euregion Meuse-Rhine, which are responsible for non-police security, emergency medical services and fire protection/technical assistance



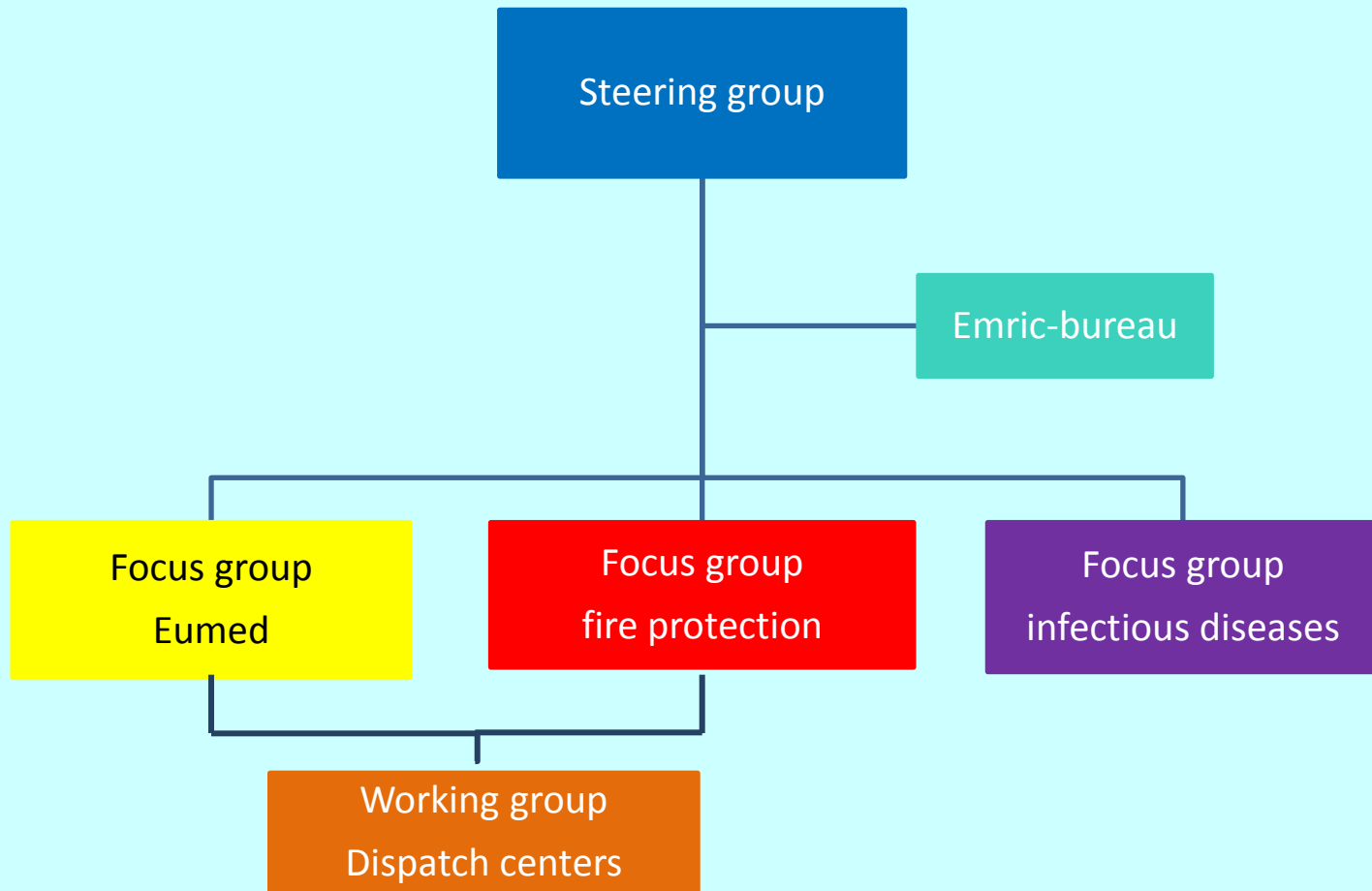
Film

- <http://youtu.be/UFIGNnC00QA>

Euregional cooperation

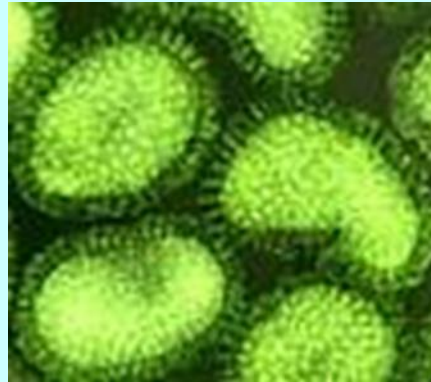


The committees



Themes

Fire fighting
Technical assistance
CBRNE
Acute medical care
Hospital care
Disease control
Crisis communication
Risk communication



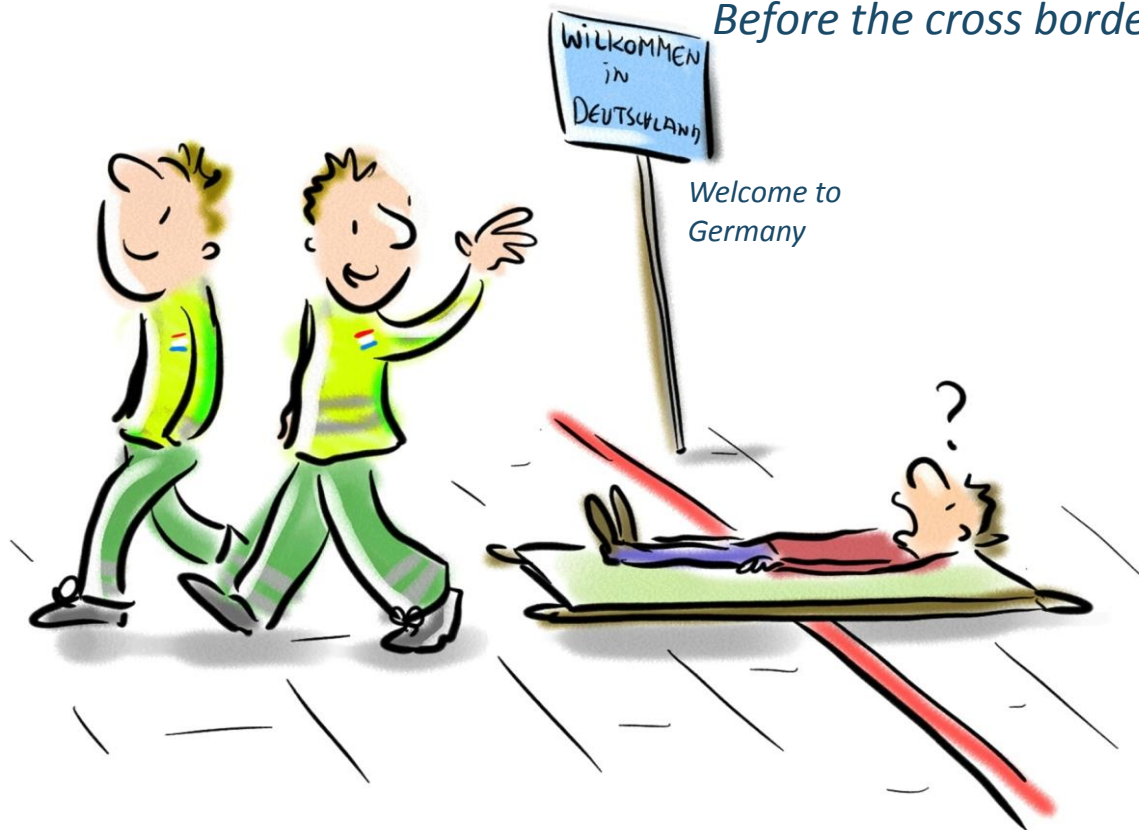
Daily care



Large scale accidents/ disasters

VÓÓR DE EUREGIONALE SAMENWERKING..

Before the cross border cooperation



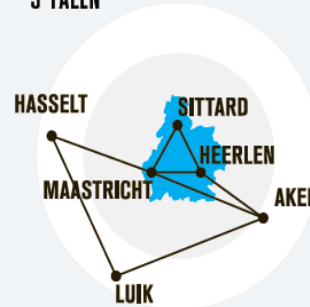
Facts and figures

REISTIJDEN TREIN



EUREGIO MAAS-RIJN

3,9 MILJOEN INWONERS
3 LANDEN
3 TALEN



Densely populated (4 million/ 10.000 km²)

Border rich

Industrialized

Knot of east-west and north-south transport routes (train, railway, road traffic, canal)

8 airports with max 1 hour travel distance

Many tourists

Frequent cross-border activities (schools, discos, shopping, events)

3 languages

14 levels of government

Differences in laws

8 VLEGVELDEN BINNEN 1 UUR REISAFSTAND



Nieuwstraat / Neustraße Kerkrade



Met dank aan Dr. Med. Joachim Habers



Facts and figures

7 dispatch center

3 university hospitals

± 40 ambulance services

7 public health organizations

>100 fire companies

>50.000 aid workers

About 750 cross border interventions per year

Cooperation agreements

Over 40 years experience in cross border cooperation

Statistics

		2014			
Grensoverschrijdende inzetten	Grenzüberschreitende Einsätze	Interventions transfrontalières			
Meldkamer, Leitstelle, Centrale d'alerte	Aantal (totaal), Anzahl, Nombre	Aantal	B	NL	D
		Bestemming, Bestimmung, Destination			
Hasselt (B)	Brandweer	0	0	0	0
	Ambulance	0	0	0	0
	Intensive care transport	0	0	0	0
	Niet urgent transport	0	0	0	0
Luik(B)	Pompiers	0	0	0	0
	Ambulance	1			1
	Transports urgents	147		1	146
	Transports non urgents				
	Helicopter	4			4
Zuid Limburg (NL)	Brandweer	73	73		
	Ambulance	146	56		90
	Intensive care transport (MICU)	3	2		1
	B-vervoer	134	86		48
Düren(D)	Feuerwehr	0	0	0	0
	Rettungswagen	0	0	0	0
	Rettungswagen + NEF	0	0	0	0
	Intensiv Transport (ITW)	0	0	0	0
	Krankentransport incl. Interhospital	0	0	0	0
Euskirchen(D)	Feuerwehr	0	0	0	0
	Rettungswagen	0	0	0	0
	Rettungswagen + NEF	0	0	0	0
	Intensiv Transport (ITW)	0	0	0	0
	Krankentransport incl. Interhospital	0	0	0	0
Kreis Heinsberg(D)	Feuerwehr	31		31	
	Rettungswagen	9		9	0
	Rettungswagen + NEF	15		15	0
	Intensiv Transport (ITW)	0		0	0
	Krankentransport incl. Interhospital	0		0	0
Städteregion Aachen(D)	Feuerwehr				
	Rettungswagen	116	8	108	0
	Rettungswagen + NEF	31	3	28	0
	Intensiv Transport (ITW)				0
	Krankentransport incl. Interhospital	12	1	11	0
	Hubschrauber hélicoptère Heli	50	4	46	0
Stadt Aachen (D)	Feuerwehr				
	Rettungswagen	75	13	62	0
	Rettungswagen + NEF	73	22	51	0
	Intensiv Transport Intensive care				0
	Krankentransport incl. Interhospital	2		2	0
	Totaal	922	268	364	290
Versie:27.05.2015	Totaal medisch	818	195	333	290
	Totaal brandweer	84	73	31	0



EMRIC partners in cooperation

Veiligheidsregio Zuid-Limburg (NL)

Brandweer Zuid-Limburg

GGD en GHOR Zuid-Limburg (NL)

Brandweerdistricten Roermond en Weert

Veiligheidsregio Limburg-Noord

Feuerwehr Stadt Aachen (D)

Malteser Hilfsdienst Aachen (D)

DRK Städteregion Aachen

Gesundheitsamt Städteregion Aachen(D)

Amt 32 Städteregion Aachen (D)

Gesundheitsamt Kreis Heinsberg (D)

Ordnungsamt Kreis Heinsberg (D)

Ordnungsamt Kreis Düren (D)

Ordnungsamt Kreis Euskirchen (D)

Provincie Limburg (B)

Provincie Luik (B)

I.I.L.E. (B)

Provincie Limburg (B)

MUMC (AZM) Maastricht (NL)

CHU Liège (B)

Task Force Net (EMR)

Regierungsbezirk Köln (D)

Innenministerium NRW (D)

Ministerie van V & J (NL)

Universiteit Maastricht (NL)

Vlaamstalige gemeenschap (B)

Duitstalige gemeenschap (B)

NeBeDeAgPol (EMR)

ZOL Genk (B)

UK Aachen (D)

Protection civile (B)

THW (D)

Sitec (NL)

Challenges

Creating the required network	√
Different legislation	X
Missing agreements at national level	√
Large scale incidents	√
Acute medical assistance BeNeLux	√
Acute medical assistance D-NL	x
Acute medical assistance D-B	x
Missing agreements at regional level	√
Acute medical assistance NL-D (Euregio Meuse-Rhine)	√ ¹
Fire protection	√ ²
Large scale incidents	√ ³
Different systems	X
Data protection	X
Different financial arrangements	X
However, payment of deployment of rescue services arranged between D-NL insurances and in the BeNeLux agreement on rescue services	
Special signals	√
Import of opiates	√
Import and export from B and NL to D arranged	√
Import and export from D and B to NL not arranged	x
Import and export from D and NL to B unknown	?
Cross-border radio communication	X
Different languages	X
Different cultures	X

¹ Signed by the responsible partners on 29.11.2013. Awaits recognition from RB Cologne.

² Awaits recognition from the safety regions of RB Köln.

³ idem

Different systems – an example

	Belgium	Germany	The Netherlands
Basic Life Support	Ambulance 2x Ambulancier	Krankentransportwagen 1x Rettungshelfer 1x Rettungssanitäter	Ambulance 1x Ambulancechauffeur 1x Ambulanceverpleegkundige → anything except narcosis
		Rettungswagen 1x Rettungssanitäter 1x Rettungsassistent	
Advanced Life Support + Prehospital Trauma Life Support	Paramedic Intervention Team (PIT) (pilot project) 1x Ambulancier 1x Ambulanceverpleegkundige	(soon: Notfallsanitäter)	
Medical measures on physician level			
Advanced medical measures	Mobiel Urgentie Groep (MUG) / Service Mobile d'Urgence et Reanimation (SMUR) 1x Ambulanceverpleegkundige 1x Emergency physician	Notarzteinsatzfahrzeug (NEF) 1x Rettungsassistent 1x Emergency physician	Mobiel Medisch Team (MMT) 1x Ambulanceverpleegkundige 1x Emergency physician

Crossborder emergency response plans

Eumed	=	acute medical care	➤	BTCCE
Eumed Ambu	=	ambulance care		
Eumed Hospital	=	hospital trauma care		
Eumed Infectious Diseases	=	information exchange		
Emric	=	fire service + CBRNE		



Eumed



Eumed Ambu

MKA/Leitstelle/ Centrale 100	Eumed 1 Aanrijtjij < 30min Hilfsfrist/ Délai		Eumed 2 Aanrijtjij < 60 min Hilfsfrist/ Délai		Eumed 3 Aanrijtjij >60 min Hilfsfrist/ Délai	
MKA Zuid-Limburg	3 Amb.	3 Patienten/ victimes	Eumed 1 + 15 Amb	18 Patienten/ victimes	Eumed 2 + 6 Amb. + 1GNK	30 Patienten/ victimes
LST Städteregion Aachen Stadt Aachen	3 RTW + 1 NEF	3 Patienten/ victimes	PTZ 10 NRW (1 ELW, 2 Notärzte, 4 RTW, 4 KTW) ¹	10 Patienten/ victimes	Eumed 3 = BHP 50 NRW	50 Patienten/ victimes
NRW Standart (Ü-MANV)						
LST Städteregion Aachen Altkreis Aachen	3 RTW + 1 NEF 0der RTH	2 Patienten/ victimes				
NRW Standart (Ü-MANV)						
LST Kreis Heinsberg	3 RTW 1 NEF	3 Patienten/ victimes				
NRW Standart (Ü-MANV)						
LST Kreis Düren	3 RTW 1 NEF	3 Patienten/ victimes				
LST Kreis Euskirchen						
Centrale 100 Liège	3 Amb. 1 Smur	3 Patienten/ victimes	6 amb. 1 Smur	6 Patienten/ victims	6 amb. 1 Smur	6 Patienten/ Victimes
110-centrale Limburg (B)	3 Amb. 1 MUG	3 Patienten/ victimes	6 amb. 1 MUG	6 Patienten/ victims	6 amb. 1 MUG	6 Patienten/ victimes

¹ Als Eumed 2 angefragt is, kan Eumed 3 niet geleverd worden door de LST Städteregion Aachen
 Wenn Eumed 2 angefragt worden ist, kann Eumed 3 nicht mehr geliefert werden durch der LST Städteregion Aachen.
 Le LST Städteregion Aix ne pourra pas livré Eumed 3, si Eumed 2 a déjà été demandé.

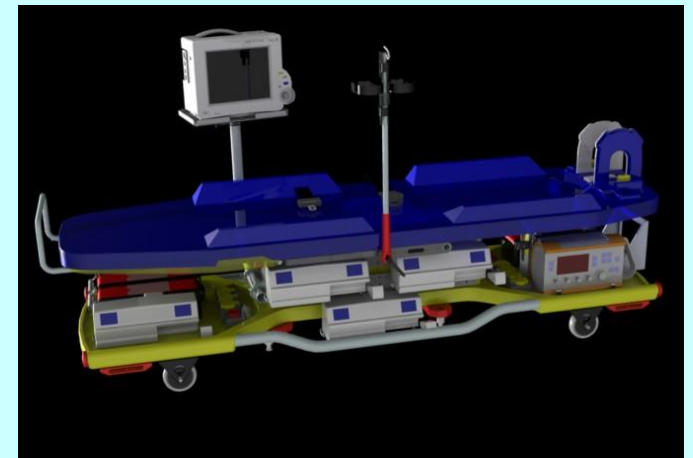
Eumed hospital

Hospital Disaster Beds Euregio Maas-Rijn					
Hospital	T1 and T2 – capacities				Contact
Name	T1		T2		
	0-2 hours	3-4 hours	0-2 hours	3-4 hours	
B-Liège	4	8	8	12	Centrale 100 Tel: 00.32.4.344.98.32
B-Limburg	6	13	16	16	Dienst 100 Tel : 00.32.11.22.49.26
NL Zuid-Limburg	5	13	8	20	MKA Zuid-Limburg Tel : 00.31.43.400.67.00
D Regio Aachen Kreis Heinsberg Stadt Aachen Altkreis Aachen	10	16	13	24	Leitstelle Feuerwehr Aachen Tel: 00.49.241.9441.250
	25	50	45	72	

Burns primary to nearest hospital for treatment trauma injuries. A separated protocol must be developed for burns.

Euregional Mobile Intensive Care (EUMIC)

- Improvement of the quality of care and efficiency of interclinical transport of ICU patients
- Cooperation in de Euregion Meuse-Rhine
- Collecting data in de Euregion → New kind of emergency care needed?
- Development of a new concept for a treatment during an intensiv care transport



'Boundless Trauma Care Central Europe'

Participants:

Germany

Lower Saxony
North Rhine-Westphalia
Rheinland-Pfalz
Baden-Württemberg
Saarland

Belgium

(Region Liege & Deutsch- Sprachige
Gemeinschaft?!)

Luxembourg

France

(north-east)

Netherlands

(eastern border)





Emric





Infectious diseases

Monitoring

Dashboard

Comparison of protocols

Exchange of expertise

CBRN

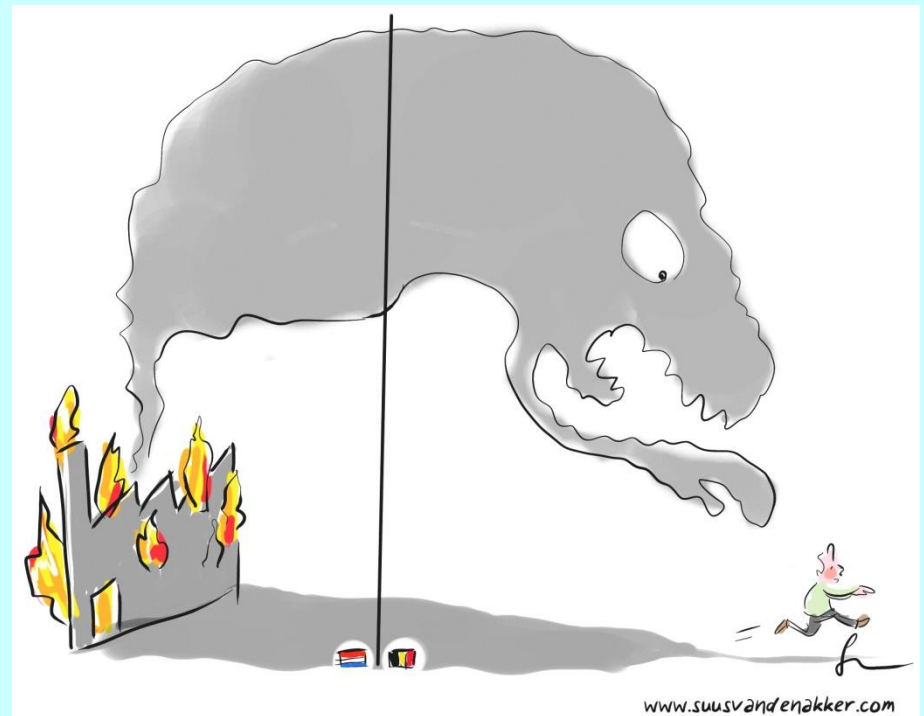
Common measurement methods

Common interpretation of measurement results

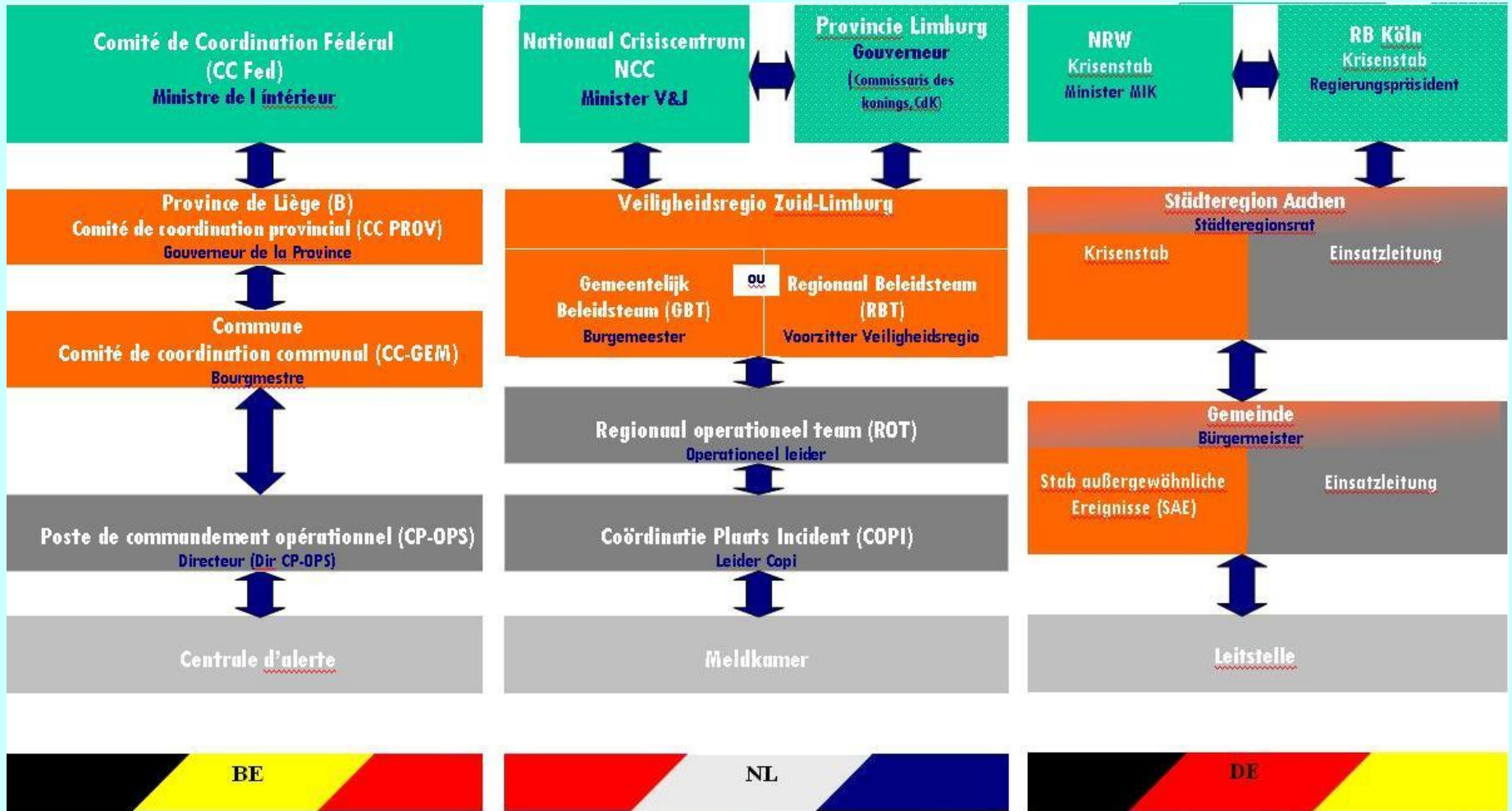
Exchange of experts

Exchange of expertise

Exchange of capacities



Crisis communication



Steering group
= Directors comitee

Multiannual plan
2014-2019

- **Implementation of agreements**
- Improvement of agreements
- Giving agreements a legal base
- Communication
 - Crises and risks
 - Public relations

Future perspective 1

- **Ongoing implementation of conventions and products**
- **Improvement of conventions**
 - (Qualitymanagement)
- **Judicial incorporation of conventions**
- **Communication**
 - (Crisis communication, Public relations)



Future perspective 2

Academy

Consortium of Universities and High Schools in the Euregio Meuse-Rhine and other European regions

**Goal: Developing and offering modules
European Public Safety and Public Health**